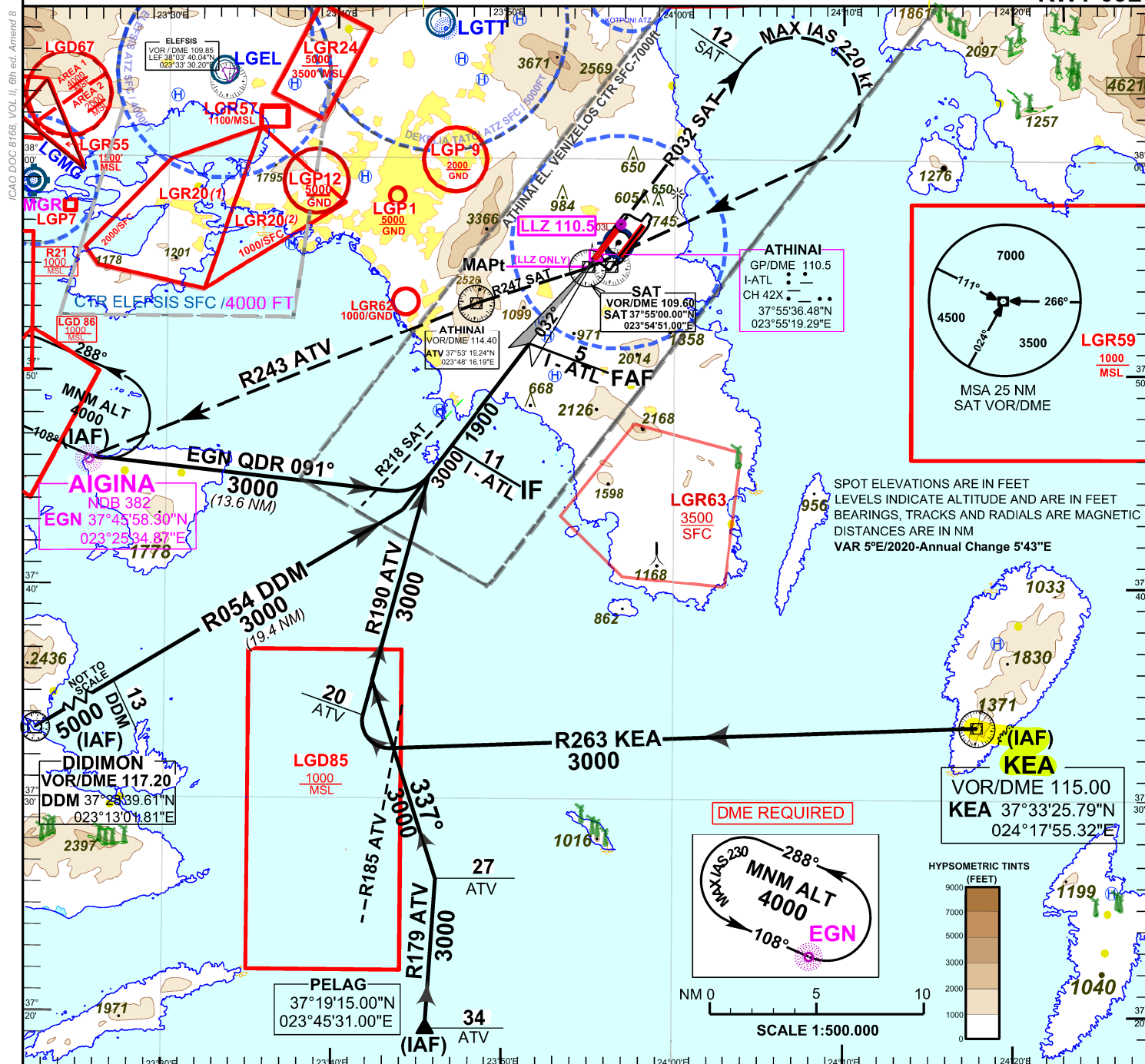


ATHINAI/EL FETHERIOS VENIZELOS

ILSy or LOCy  
RWY 03L

**MISSED APPROACH :** Climb straight ahead, intercept and follow R032 SAT.  
At 12 DME SAT turn right inbound to SAT.  
Intercept R247 SAT inbound to ATV .  
Then intercept R243 ATV inbound to EGN and hold.  
**Climb to 4000ft.**

Turn at 12 DME SAT

TRANSITION ALTITUDE  
9000 FT

Nautical Miles to/from THR	0 (ZERO) DME I-ATL AT THR RWY 03L	ELEV 255FT (THR RWY 03 L)
----------------------------	-----------------------------------	---------------------------

OCA / H			A	B	C	D	D <sub>L</sub>
STRAIGHT-IN APPROACH (ALT/HEIGHT W.R.T. THR RWY 03L ELEVATION)	CAT I	FT	455 / 200				
	CAT II	FT	355 / 100				
	LOC ONLY	FT	1270/ 1015				
CIRCLING (ALT/HEIGHT W.R.T. A/D ELEVATION)			1200/892	1300/992	N / A		

Rate of descent				
nm/h	100	135	160	185
ft/min	530	717	849	982

LLZ RECOMMENDED ALT			
DISTANCE I-ATL DME	4	3	2
ALTITUDE 5.2% APPROACH	1583	1265	946